

Application

- Can be used to transfer clean or dirty water or other liquids similar to water in physical and chemical properties.
- Suitable to be immersed in water for lifting water from the well or the pool, and draining water from the basement.

Pump

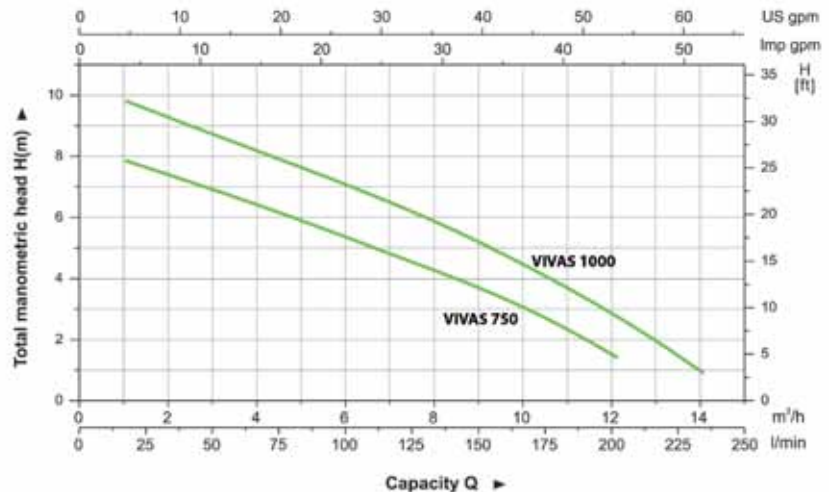
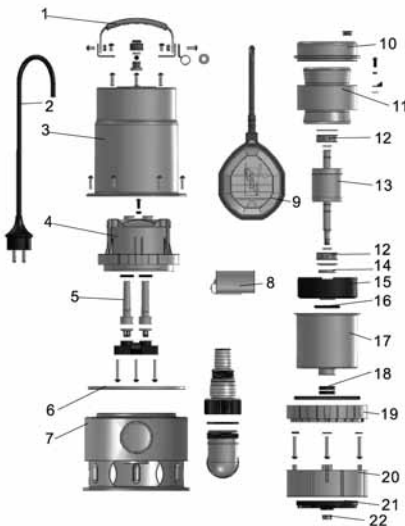
- Stainless steel pump body
- Float switch ensures automatic cut-in and cut-out
- Max. liquid temperature: +35°C
- Max. immersion depth: 7 m
- Max. diameter of particle: 35 mm

Motor

- Motor with aluminum winding
- Built-in thermal protector
- Insulation class: F
- Protection class: IPX8



Pump Type	Power		Inlet/Outlet	Max. Flow (L/min)	Max. Head (m)	Max. Immersion (m)
	kW	hp				
VIVAS 750 - 0,75 kW	0,75	1,0	30,5/40	167	8	7
VIVAS 1000 - 1 kW	1	1,3	30,5/40	200	11	7



Part	Part	Part
1 Handle	9 Flow switch	17 Canister
2 Cable	10 Upper cover	18 Lip seal
3 Pump body	11 Stator	19 Retainer ring
4 Roof	12 Bearing	20 Pump support
5 Jacket	13 Rotor	21 Impeller
6 O-ring	14 Lip seal	22 Nut
7 Pump body	15 Bearing base	
8 Capacitor	16 O-ring	